

# SAFETY PROTECTION STARTS HERE



  
**PS** Safety Access™

877.446.1519

[pssafetyaccess.com](http://pssafetyaccess.com) | [4psinfo@psindustries.com](mailto:4psinfo@psindustries.com)

 **PS INDUSTRIES**  
INCORPORATED

2025





# A Safe Worker Is A Better Worker, And Our Products Prove It

Our PS Safety Access™ product offering is a complete line of safety and fall-protection products that help keep employees safe and increase material handling efficiency. Simply put, our safety products are built to ensure that users get to go home each and every night after their work is done. These gates, hatches and doors provide barriers against the everyday workplace dangers that can injure personnel and hinder productivity.

## LADDER FALL PROTECTION



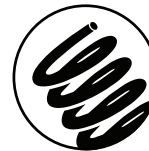
### EDGEHALT® Ladder Safety Gate (LSG)

PATENTS  
PENDING

New patent-pending EdgeHalt® Ladder Safety Gates are now the safest safety gates on the market. Their innovative Slam-Proof® technology closes each gate in a quiet and controlled manner, extending the life of the gate. They have been tested to the OSHA, ANSI and Canadian COHS standards and exceed the loading requirement by two times. Their adjustable sizing not only makes installation simpler, but it also allows for a compact shipping box, reducing shipping costs.



Controlled / Quiet  
Operation



Spring Guaranteed  
For Life Of Gate



OSHA, ANSI,  
& Canadian COHS



Save On Shipping



### EDGEHALT® Posi-Stop Ladder Safety Gate

(LSGSPS) (LSGSPD)



Compliant



Save On Shipping



Controlled / Quiet  
Operation

In addition to the single model, the new line includes the Posi-Stop model, available in both single and double configurations. These adjustable, Slam-Proof gates are the perfect solution when you don't have a regular railing or surface for a strike plate to stop or rest in place against. The double configuration is perfect for situations where side room is limited and the swing area of the gate needs to be minimized.



Spring Guaranteed  
For Life Of Gate



Controlled / Quiet  
Operation



OSHA, ANSI,  
& Canadian COHS



CE Marked

### EDGEHALT® Adjustable Safety Gate (ASG)

This one gate size is flexible enough to fit a large range of guardrail openings (18"-36"). Its guaranteed-for-life springs have been tested to exceed more than one million cycles. It is CE Marked and has been tested to the OSHA, ANSI and Canadian COHS standards, exceeding the loading requirement by two times. This gate comes with Slam-Proof technology to provide extra safety to the operator while the gate is closing. It controls speed, reduces noise and adds life to the gate.



Compliant



Personnel Fall Protection

## EDGEHALT® (LSGF)

*Full Height Ladder Safety Gate*

The EdgeHalt Full Height Ladder Safety Gate is an OSHA- and ANSI-compliant swing gate system that is self-closing to ensure that protection is in place when it is needed most. It provides a 42" top rail, mid-rail and 5" safety toeboard for increased personnel protection.

## SAFETY GATE ACCESSORIES



Simple Installation



Personnel Fall Protection

### LADDER SAFETY GATE STAND-OFF MOUNTING SYSTEM (LSG-STNDOFF)

This attachment creates increased platform space on the mezzanine edge and provides a steadying point for personnel to utilize when transitioning through the Ladder Safety Gate.



### LOCK-OUT KIT

This kit allows for additional security to prevent unauthorized access to restricted areas, elevated platforms or mezzanines by locking the gate so that no one can pass through.

(515083 A)

### LADDER SAFETY GATE ADAPTER BRACKET

Compatible with the EdgeHalt Single or Full Height Ladder Safety Gate, this adapter bracket is used for unique mounting needs.



LARGE PIPE ADAPTER BRACKET (LP-2204)

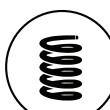


FLAT BAR ADAPTER BRACKET (FB-2205)



ANGLE IRON ADAPTER BRACKET (AC-2206)

## TRAFFIC CONTROL & EQUIPMENT GUARDING



Over One Million Cycle Tested



Swings Bidirectionally

### EDGESAFE® (EPAG) *Personnel Access Gate*

Warn personnel about dangerous or off-limits areas with the EdgeSafe Personnel Access Gate. This durable, floor-level gate swings bidirectionally (both ways) to allow pedestrians to enter or exit an access-restricted area. In addition, there is an 8.5" x 14" area to affix warning signage to the gate (signage not provided). *Pictured with a Mounting Post Kit (sold separately).*

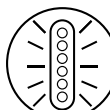


NEW

**(EPAGS)** This single-arm model features a single bar for a discreet appearance, easier installation and a lower overall cost. As versatile as it is functional, this gate excels at protecting floor-level areas in which personnel and forklifts share the same traffic spaces, controlling a single access point in order for pedestrians to safely enter or exit restricted areas. *This model is not to be used for fall protection.*



NEW



Intense Visual Alerts



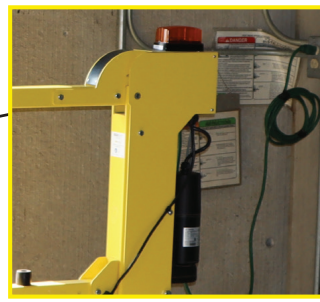
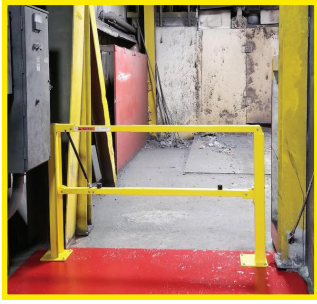
Always On Duty

### EDGESAFE® (EPAS) *Pedestrian Awareness System*

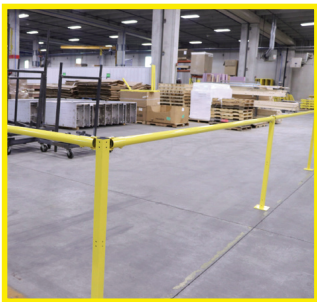
This system uses intense LED lights to alert forklift drivers to the presence of a pedestrians whenever someone activates the light beam sensor by walking past. It can be as simple as an individual post with a light beam or as complex as an archway with remote light sensors.



# TRAFFIC CONTROL/EQUIPMENT GUARDING & MATERIAL HANDLING SOLUTIONS



"Operator" push button option (sold separately) allows the gate to be easily opened and closed with the simple push of a button.



## EDGESAFE®

*Smart Gate*

(ESG AND ESGDBL)

Improve employee and customer safety the smart way by utilizing the EdgeSafe® Smart Gate in your facility. With flexible sizing to fit virtually any situation, this gate is ideal for a variety of applications, including machine guarding, equipment protection, ground-level traffic/pedestrian control, area perimeter protection, loading docks and so much more.

The Smart Gate lifts vertically 90 degrees (without pinch points), giving access to the restricted/protected area. Its Slam-Proof technology controls speed, reduces noise and provides safety to the operator while the gate is closing. In addition, each gate is designed with a lock-out feature to prevent unauthorized access. EdgeSafe Smart Gates are available in both single (48" to 156") and double (108" to 324") configurations. The double gates are well-suited for low headroom and wide areas.



Controlled / Quiet Operation



Adjusts To A Variety Of Widths



Approved For Fall Protection



## EDGESAFE®

*Safety Railing*

(ESR)

The incredibly customizable EdgeSafe Safety Railing serves as the foundation for a complete safety system in your facility. By utilizing a universal, omnidirectional bracket, this safety railing is flexible enough to address almost any application from the top of the mezzanine to the ground level (unlike a typical straight or 90-degree railing) and adaptable enough to follow virtually any required angle.

This safety railing system is sold in starter packs (2 posts and 4 railing brackets), add-on packs (1 post and 4 railing brackets), a 2 pack of schedule 10 steel pipe (89" lengths) and toeboards, allowing you to customize the railing to meet your needs.



Compliant



Adapts To Virtually Any Angle



Simple Installation

# ROOF HATCH SAFETY



Simple Installation



Strong, Stable Grip

## HATCHGRIP® (HTG-PCG)

HatchGrip® provides ladder extension grips that ensure a firm, stable grip for employees exiting and entering a roof hatch.



Compliant



Strong, Stable Grip

## HATCHSAFE® (HSF)

HatchSafe® is a full-perimeter, self-closing railing system complete with integrated Ladder Safety Gate and HatchGrip horizontal grab bars, ensuring a safe, stable grip for employees entering and exiting the roof hatch.



# MATERIAL HANDLING SOLUTIONS



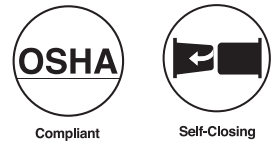
## PICKSAFE™ Finger Gate (PSFG)



The new PickSafe™ Finger Gate is pushed open by a pallet, then durable springs allow it to self-close as the pallet clears the gate. It can utilize up to eight arms (and as few as one), with each arm of the gate operating independently from the others.



## PICKSAFE™ Pallet Rack Safety Gate (PRG)



This self-closing, dual-gate system is designed to fit 3-inch columns. Simply forklift palletized material through the gates and back away.



## SAFEMEZZ360™ (SMZ)

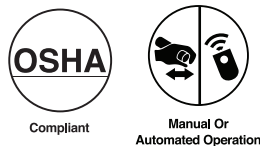
SafeMezz360™ is the all-angles way to protect your team on the mezzanine. This ANSI- and OSHA-compliant fall-protection product features Slam-Proof® technology to control speed, reduce noise and provide safety to the operator while the gate is closing. It includes a 5" safety toeboard and is available in single or double pallet widths.



SafeMezz® Vertical, Horizontal, Downward and Pallet Gates are rugged, practical and OSHA compliant. These gates open to allow you to forklift materials to your elevated space, then close to keep personnel safe from falls. The Vertical Gate is ideal for mezzanines with limited side room and deck space, the Horizontal Gate is perfect when headroom is limited and the Downward Gate is an excellent choice for buildings with limited side room or headroom. The Pallet Gate is ideal for material handling, warehousing and picking/packing areas.



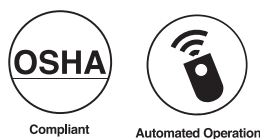
## SAFEMEZZ® Vertical Gate (MGV)



## SAFEMEZZ® Horizontal Gate (MGH)

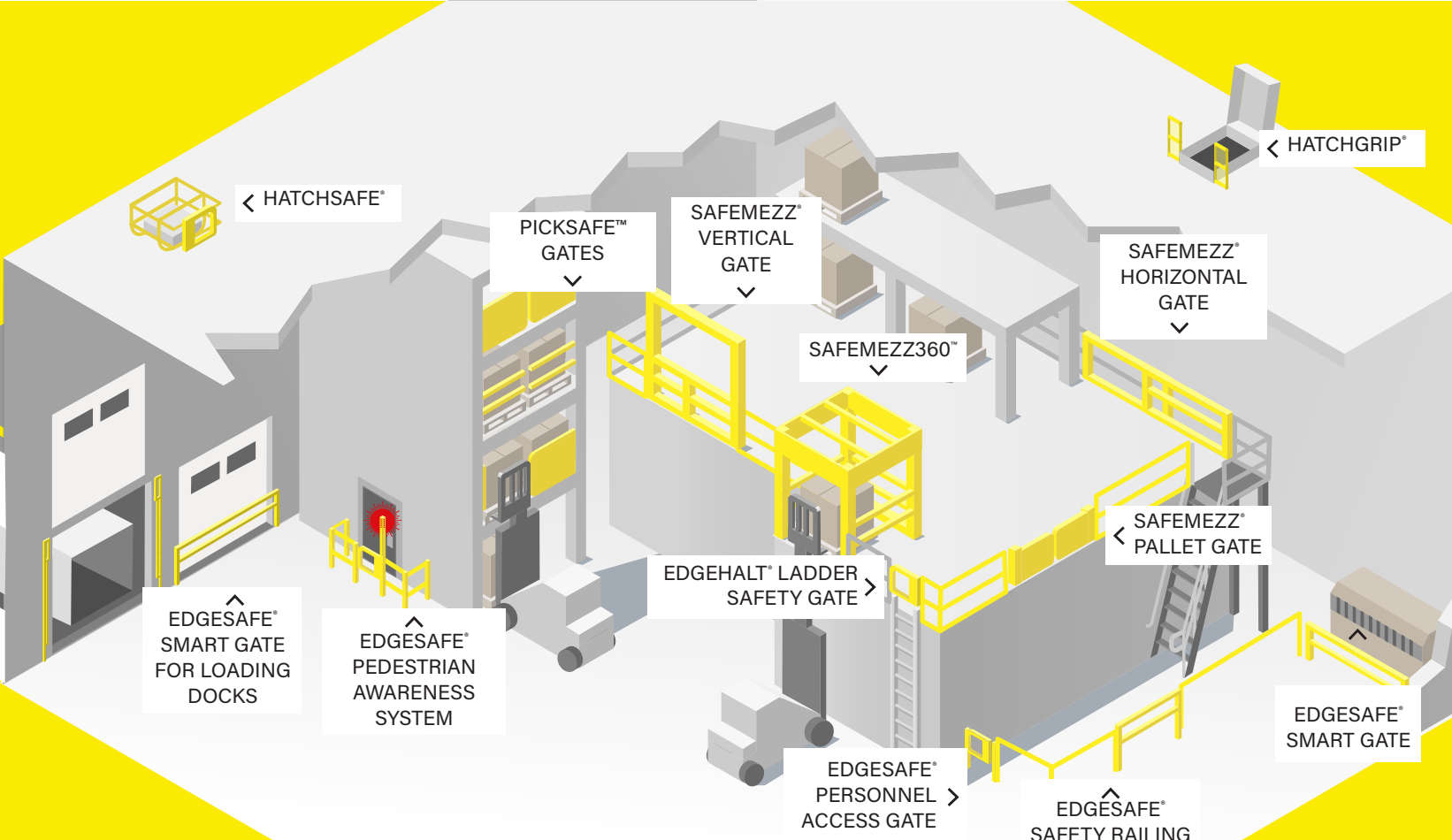


## SAFEMEZZ® Downward Gate (MGD)



## SAFEMEZZ® Pallet Gate (PLG)





**Check out these other product lines from PS Industries®**



**PS Access Solutions™**  
The Ins And Outs Of Industry

*PS Access Solutions™ includes a complete line of industrial doors and hatches constructed to specifically withstand the abuses of industry and manufacturing.*



**PS Flood Barriers™**  
Solutions That Hold Water

*PS Flood Barriers™ offers a complete line of flood doors, walls, planks and hatches that provide proven protection against floodwaters.*



**PS Public Protection™**  
Safety From The Unexpected

*PS Public Protection™ manufactures customized doors, hatches and barriers that mitigate unforeseen risks to your business or residence, both from nature and humans.*

877.446.1519 | [pssafetyaccess.com](http://pssafetyaccess.com) | [4psinfo@psindustries.com](mailto:4psinfo@psindustries.com)  
1150 South 48th Street | Grand Forks, ND 58201